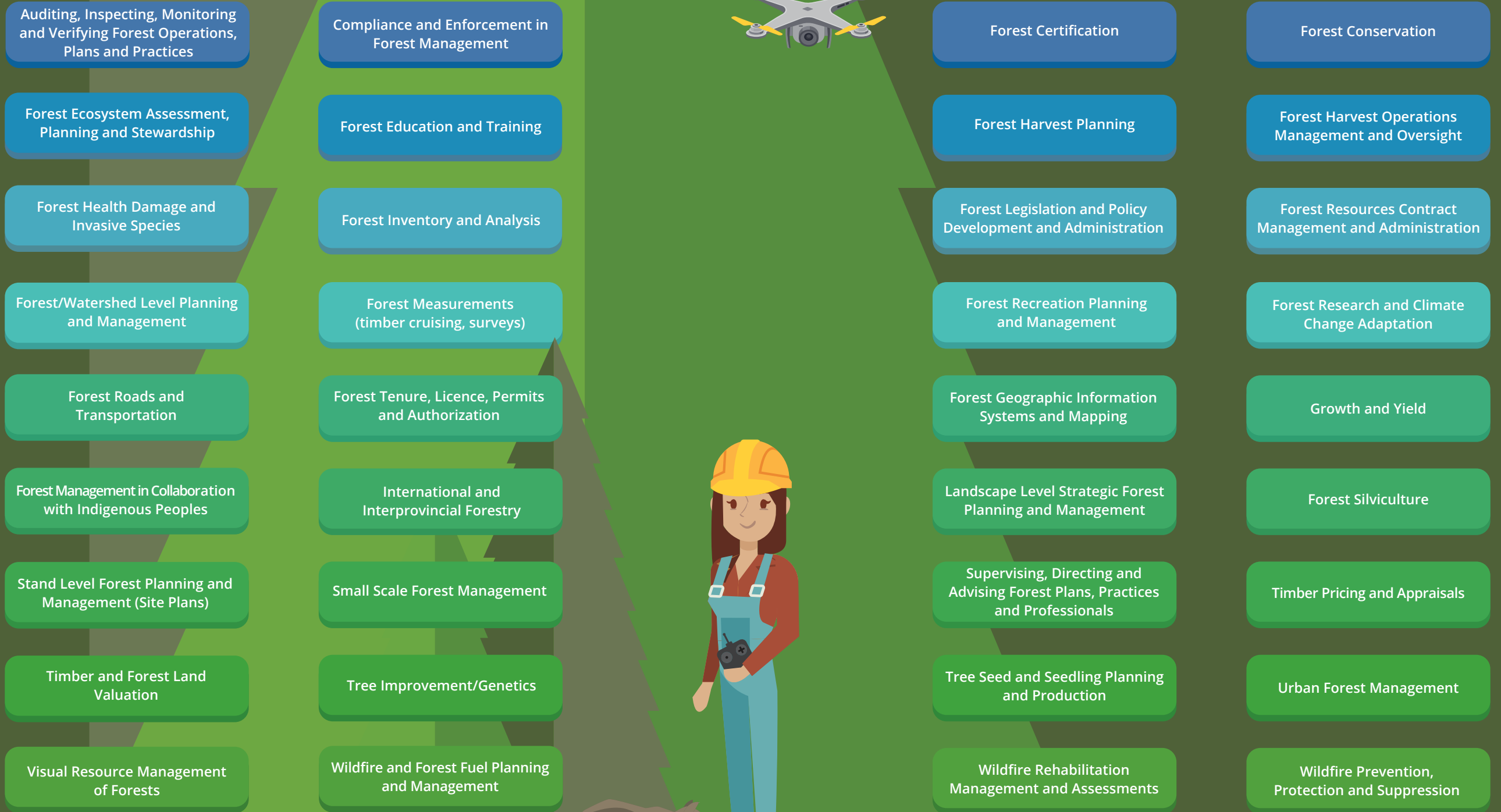


PROFESSIONAL FORESTRY PRACTICE AREAS

* These practice areas reflect work that is usual and customary to the practice of professional forestry, requiring professional judgment and a body of procedures, practice guidance, research, and/or professional development to support forest professionals in effectively undertaking this work.



If the work you are hiring for involves any of these practice areas, it likely requires the experience, education, or technical knowledge of a registered forest professional (e.g. RPF or RFT). Forest professionals help employers reduce environmental risks, legal liabilities, and are more trusted by the public than a non-professional.

Within each these professional forestry practice areas, some or all of the specific decisions, advice, tasks, or services are reserved. This means that by law, only a registered forest professional can be hired to do the work. This ensures forests stay healthy over time by allowing only those with the proper education, experience, and who follow a set of professional standards, undertake the work.

